

Figure 2: ATSI enrolments (FTE) by year level, Term 3 2015 2017

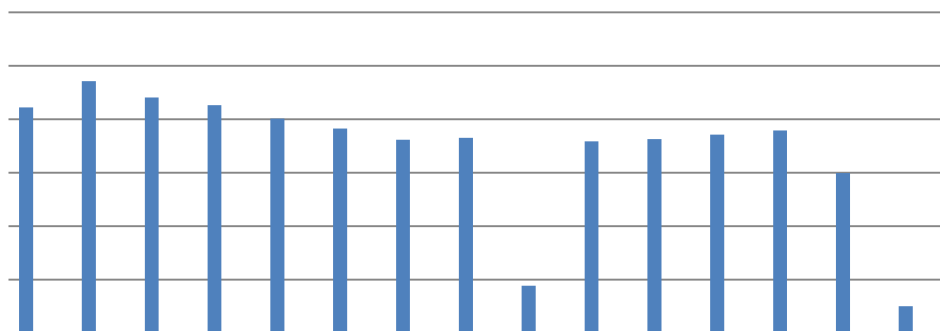


Table 2: ATSI apparent retention rates for students in Government schools, 2015-2017

	2015	2016	2017
Year 8-12	FTE	FTE	FTE
Aboriginal Students	89.5%	96.4%	96.2%
All Students	100.9%	104.6%	100.7%
Year 10 -12	FTE	FTE	FTE
Aboriginal Students	89.6%	97.1%	94.4%
All Students	95.5%	99.9%	95.6%

Apparent retention rates show the percentage of students who continued to Year 12 from their respective cohort groups.

Source for all tables and figures: DECD Term 3 School Enrolment Census 2008-2017