



## Report prepared by:

Sally Brinkman, GDirector Fraser Mustard Centre  
Yasmin HarmanSmith, Research Fellow

## Suggested citation:

Brinkman, SandHarmanSmith, Y. (2013)  
ThreeYear Evaluation PlaFraser Mustard Centre, Telethon Institute for Child Health  
Research and thDepartmentfor Education and Child DevelopmentAdelaide

## For more information about this report, please contact:

Fraser Mustard Centre  
Level 8, 31 Flinders Street  
Adelaide, SA 5000  
(08) 827 1206 / (08) 8207 2039  
[www.frasermustardcentre.sa.edu.au](http://www.frasermustardcentre.sa.edu.au)  
[info.frasermustardcentre@sa.gov.au](mailto:info.frasermustardcentre@sa.gov.au)

All Rights Reserved. No material may be reproduced without prior permission. While we tried to ensure the accuracy of the information in this publication, the Publisher accepts no responsibility or liability for any errors, omissions or resultant consequences including any loss or damage arising from reliance on information in this publication.

## Contents

1. Introduction.....	1
1.1 .....	1
1.2 Integrated services in early childhood settings: Rationale and evidence base.....	1

## 1. Introduction

1.1 Fraser Mustard visited South Australia as part of a Thinkers in Residence program.

During his visit Dr Mustard highlighted the importance of the early childhood years for the later

### 1.3 Context of Z]o OE v [• in South Australia

Department for Education and Child Development will have established South Australia There will also be four

y mid 2014 the









## 2.2 Considerations in planning the evaluation timeline

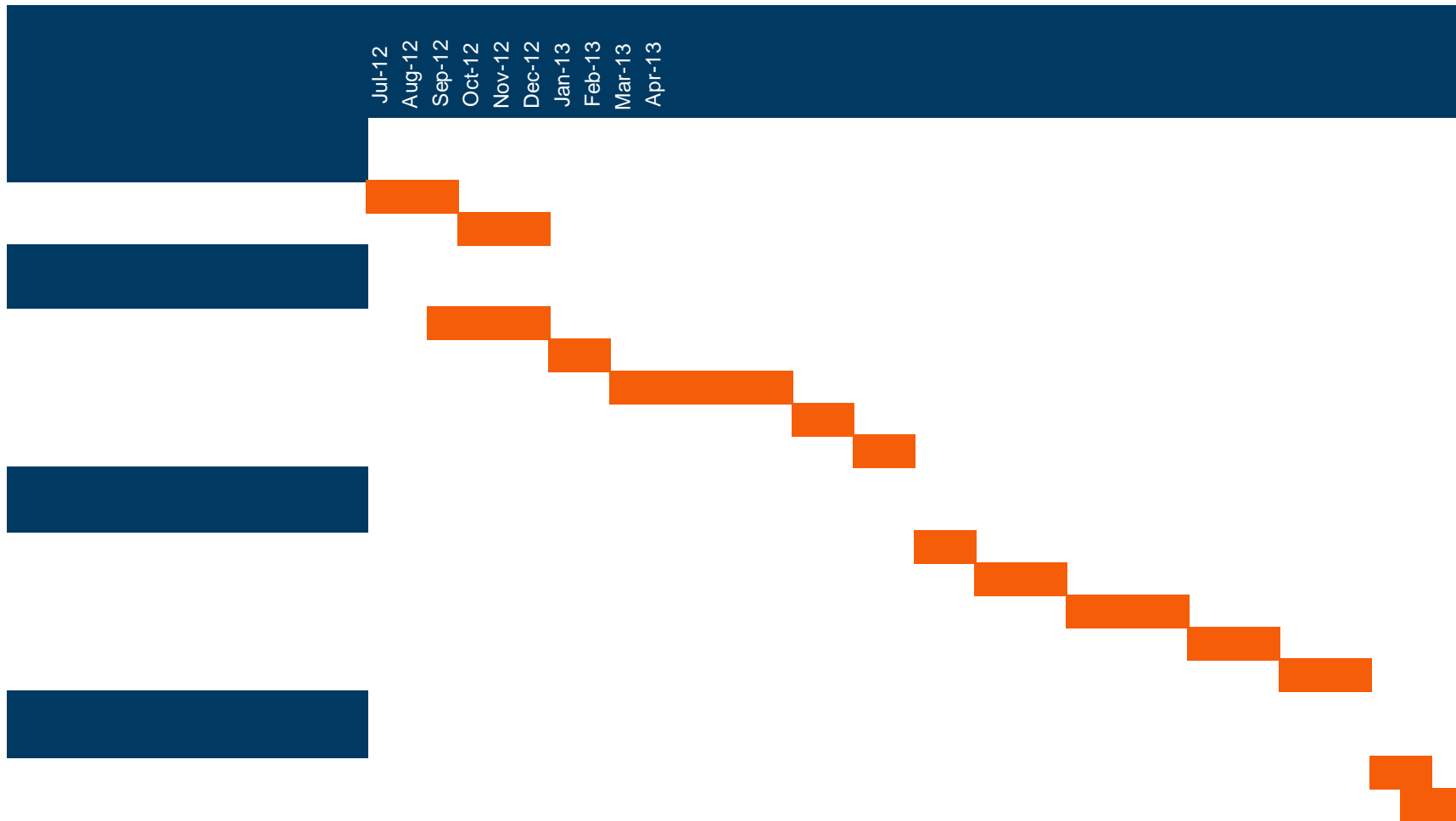
We propose a staged approach to evaluation over the next three years. This staged approach will be cognisant of the new Early Years Systems (EYS) within the CC and the establishment of the data linkage system. The EYS is rolling out across the CC and at the same time is still being developed as a comprehensive database. The data



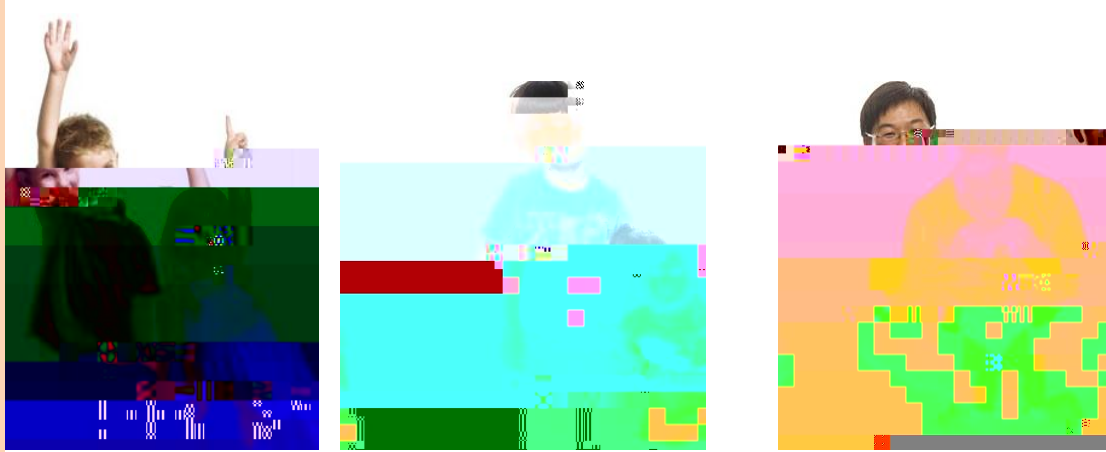
Communities are strengthened to provide physical and social environments that support wellbeing



7. Schedule of works to be completed in the three year evaluation term



## 8. References



## About the Fraser Mustard Centre

Working together to improve the development, education, health and wellbeing of young Australians, the Telethon Institute for Child Health Research and the South Australian Department for Education and Child Development have joined forces in a unique approach to research translation. The Fraser Mustard Centre collaboration aims to:

- Improve and promote the health and wellbeing of all children and young people in South Australia through the unique application of multidisciplinary research

- Help shift focus from the historical delineation between health and education services to an integrated approach with a focus on child development

- Build capacity amongst public sector staff and academic researchers to design, undertake and use research to improve the environments in which children live and the service systems which support families

- Attract funding for shared priorities for research that leads to improved developmental, educational, health and wellbeing outcomes for children

The Fraser Mustard Centre brings forward a shared vision of policy makers and world class child health researchers. It reflects a shared view of policies and outcomes for children and young people. The Centre is a unique collaboration between two organisations passionate about making a difference.

Fraser Mustard Centre  
 Level 8, 31 Flinders Street  
 Adelaide, SA 5000  
 (08) 8226 1206 / (08) 8207 2039  
[www.frasermustardcentre.sa.edu.au](http://www.frasermustardcentre.sa.edu.au)  
[info.frasermustardcentre@teDo Q E](mailto:info.frasermustardcentre@teDo Q E)



A COLLABORATION BETWEEN

